

*Project Status Report for*

# Milton School District

8/20/2020

Mike Huffman, HFD

Your Partner in Development

## Construction Progress

- **East** – Classroom furniture has arrived and is installed. LMC furniture and shelving being installed this week. Courtyard complete. Kitchen equipment has been installed. Commons complete. Bathrooms complete. Punchlist work in progress.
- **West** – Exterior landscaping complete. Window replacement 90% complete. Painting, flooring, and classroom casework is complete – EBI furniture has been delivered and is being set up. Ready for punchlist and final cleaning.
- **Harmony** – Corridor flooring complete, classrooms furniture has been delivered and installed. Exterior asphalt and final grading complete. Ready for punchlist and final cleaning.
- **Consolidated** – Exterior brick complete. Bathroom remodel in progress. Drywall and block walls complete. Painting in progress.
- **Middle School** – Exterior and interior block walls in progress. Waterproofing of exterior walls is beginning. Roof joists and roof decking in progress. All interior slabs have been placed.
- **High School** – Pool and gym additions in progress with concrete footings, foundation walls, and underground utilities. STEM addition block walls and structural steel in progress. Administrative offices complete. MEP work is ongoing for new mechanicals throughout building.

## Project Administration

- **Project Safety** – Meetings have been conducted with Middle School and High School administration to review plans for construction operations during the school year. Plans for accommodating food service deliveries, emergency egress, safety barriers and COVID protocol were discussed.
- **High School** – Punch list review of the renovated administrative office suite was completed on August 20<sup>th</sup>. This space, along with the secure entry, are now available for use.
- **All Elementary Buildings** – Punch list review of East was accomplished on August 6<sup>th</sup>. West and Harmony were addressed on August 20<sup>th</sup>.
- **Project Budget**– HFD and MSD Administration continue to closely monitor the various project budgets. A focused budget “summit” will be conducted again on August 27<sup>th</sup>.

## East Elementary

- Classrooms with new furniture
- Commons kitchen equipment
- LMC furniture installation in progress



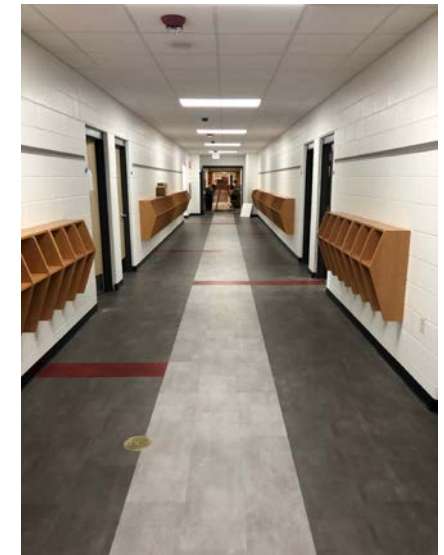
## West Elementary

- Existing classroom with new divider partition
- Exterior landscaping complete
- Bathrooms complete
- “ELL” English Language Learners and tutorial room furniture



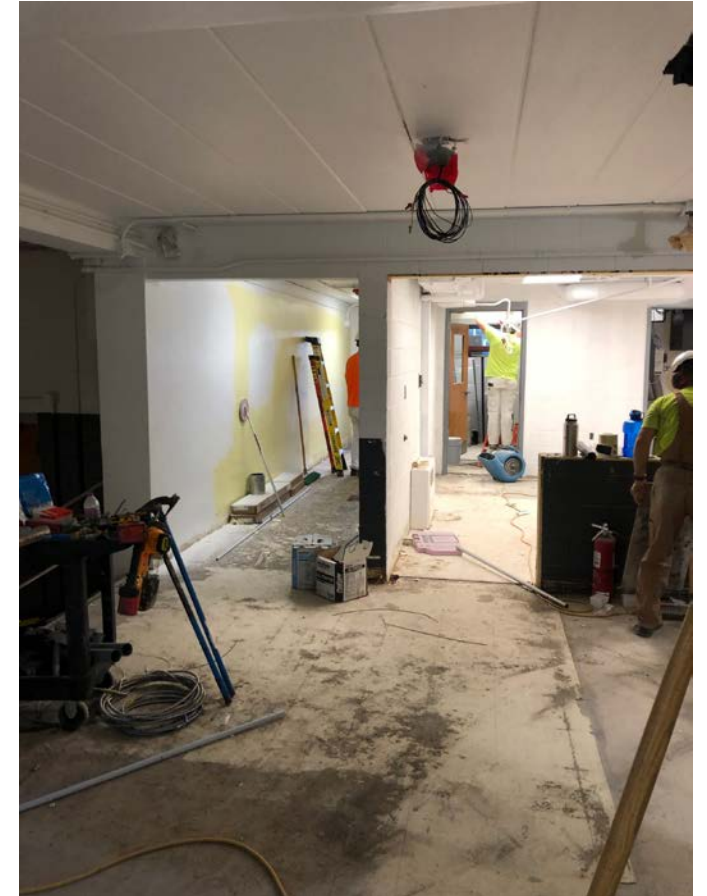
## Harmony Elementary

- Classroom furniture
- Bathrooms complete
- Exterior asphalt complete
- Finishes corridor



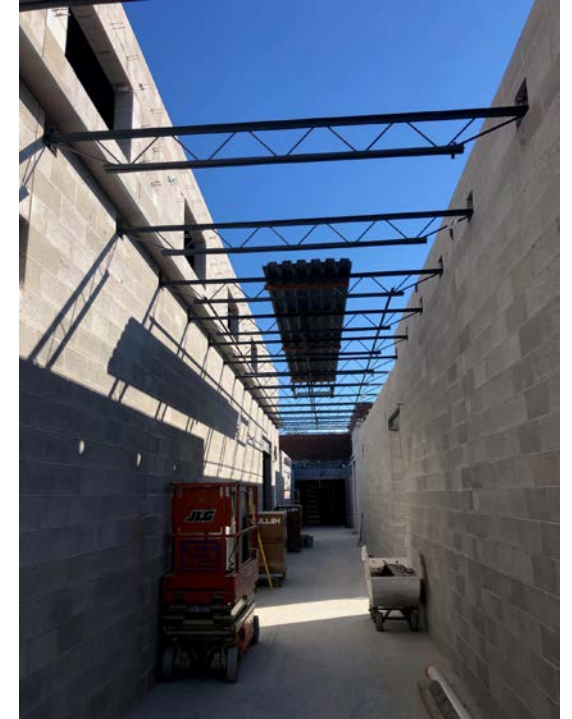
## Consolidated

- Exterior masonry and windows installed – canopy framing complete
- Interior block and drywall complete



## Middle School

- Exterior block walls
- Interior block walls
- Roof joists and roof deck in progress





## High School

- Administration office complete
- STEM block walls and framing
- Parking lot light pole bases and asphalt in progress



## High School

- New gym foundation work in progress
- Pool foundation and underground utilities



08/20/20

**Milton School District 2019 Referendum Projects  
BUDGET SUMMARY**

<b>DESCRIPTION</b>	<b>BUDGET</b>	<b>FINAL PROJECTED COST</b>	<b>PAYMENTS TO DATE</b>	<b>% Complete</b>
Pre-Development	107,660	129,345	107,134	82.83%
Professional Services <i>Design, Project Mgmt, Legal, Quality Testing</i>	3,924,459	4,045,398	3,236,097	79.99%
Owner Provided Equipment <i>Furnishings, Service Equipment, IT Equipment, Signage</i>	1,193,816	1,429,000	109,512	7.66%
Construction <i>Building and Site Development</i>	54,031,464	54,580,935	15,977,245	29.27%
Other Project Expense <i>Bond expenses, Legal Fees , Moving</i>	22,500	20,000	8,012	40.06%
Income <i>Bond income, Friends of Milton Pool, Focus on E</i>	(950,099)	(1,559,008)	0	0.00%
Owner Contingency	1,570,200	1,254,330	0	0.00%
<b>TOTAL</b>	<b>59,900,000</b>	<b>59,900,000</b>	<b>19,437,999</b>	<b>32.45%</b>
<b>FINAL PROJECTED COST</b>	<u>59,900,000.00</u>			
<b>Balance - Under / (Over)</b>	<u>0.00</u>			