

*Project Status Report for*

# Milton School District

7/22/2020

Mike Huffman, HFD

Your Partner in Development

## Construction Progress

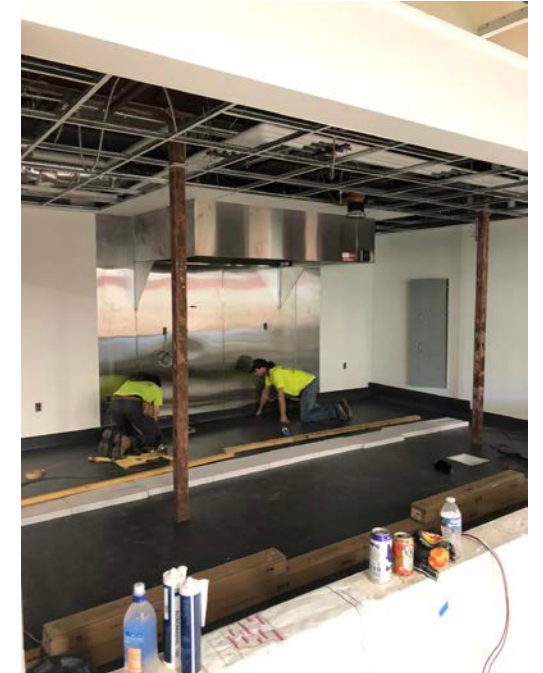
- **East** – In the new addition the classroom casework and counters are installed, Promethean Screens are mounted, and the flooring is in place. The new LMC is complete with casework, carpet, and light fixtures. The Courtyard is being landscaped. On the south side the asphalt is in place. In the existing building work continues in the cafeteria, the kitchen floor is being installed and the bathrooms are nearing completion. Temporary climate control is operating.
- **West** – Windows have been installed in the new addition and the window replacement is ongoing in the existing building. Classrooms are painted, casework is installed, ceiling light fixtures are in place, and the bathroom fixtures are complete. Classroom doors have been delivered. Temporary climate control is operating.
- **Harmony** – The construction fence has been removed, and final grading for the asphalt is complete. Roof coping is installed, and all windows are in place. Classroom casework, white boards, and hallway cubbies have been installed. Painting is complete and the floors have been prepped for flooring. Data cable in the existing building is in progress. Wood doors and hardware have been delivered and will be installed when the floors are complete.
- **Consolidated** – The exterior brick and roofing are now complete. Window frames are installed, and metal stud framing is installed at the reception and office area. MEP work is in progress. Demo work for the new student bathrooms is complete and rough plumbing is in place.
- **Middle School** – Foundation walls and underground for the new addition are 100% complete. Exterior masonry block walls are in progress. Slab on grade has been poured at the new band, choir, and science rooms.
- **High School** – Steel framing and masonry block walls are in progress at the new STEM wing. The new administrative offices have been framed and drywalled and overhead MEP's are in progress. New water piping is being fabricated and assembled in the cafeteria for distribution throughout the building. New block walls are installed in the former wrestling room. The foundation work is ongoing at the new gym and the surge tank for the new pool has been formed and poured.

## Project Administration

- **COVID- 19** – Beginning on August 17 all construction staff working within the existing buildings will be required to wear a face mask in addition to standard construction PPE.
- **High School** – Punch list review of the renovated administrative office suite is scheduled for August 13th. Furniture installation in this area will be accomplished on August 17<sup>th</sup> and move-in activities will begin on the same day.
- **All Elementary Buildings** – Punch list review of all building work (excluding the site work) will occur on July 30<sup>th</sup> at East and West with furniture installation to follow on August 3<sup>rd</sup>. Harmony punch list will be created on August 6<sup>th</sup> and Consolidated to follow on August 13<sup>th</sup>.
- **Project Budget**– HFD and MSD Administration continue to closely monitor the various project budgets. There are no significant changes to report this month.

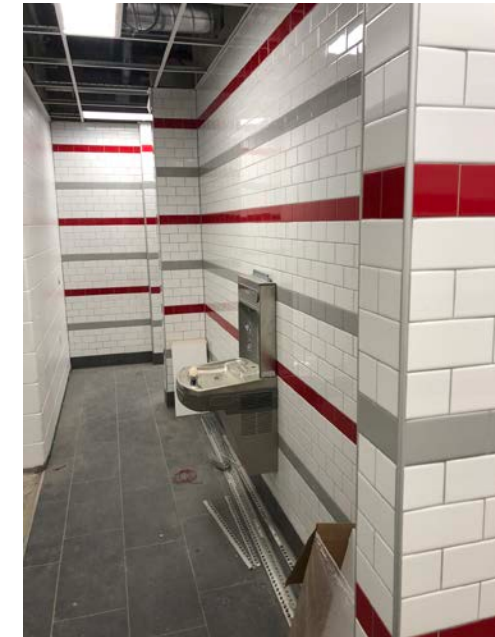
## East Elementary

- A finished classroom
- Asphalt paving at South side play area
- New LMC with casework
- Kitchen flooring being installed in remodeled Commons



## West Elementary

- New addition windows and metal panel
- New classroom ready for flooring
- Window replacement in admin office
- New bathrooms nearing completion



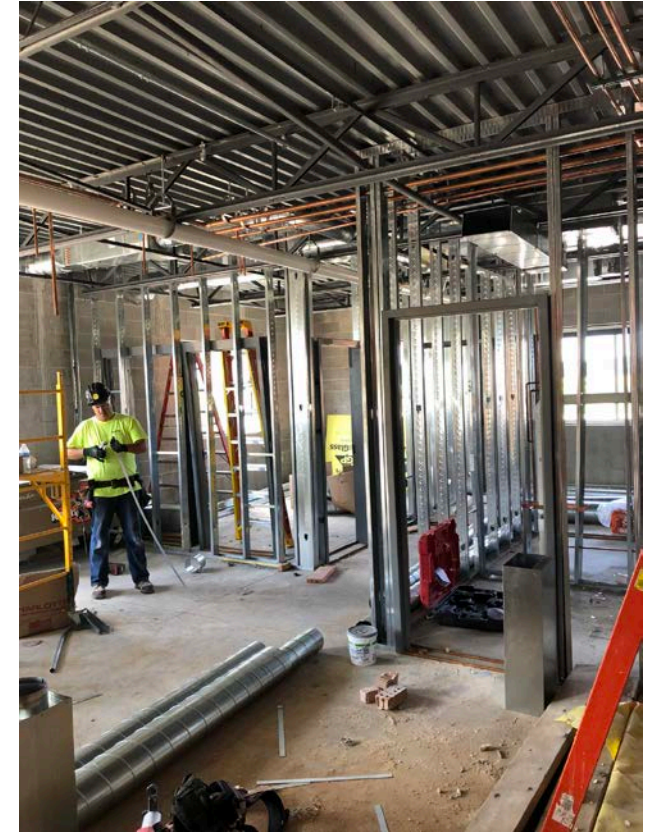
## Harmony Elementary

- New addition graded and ready for asphalt
- Completed classroom ready for flooring
- Bathrooms are complete
- Cubbies installed in corridor
- Data wiring in progress in existing corridor



## Consolidated

- Exterior brick complete and window frames installed
- Metal stud installed and MEP work in progress



## Middle School

- New block walls at Multipurpose and Band addition
- Slab on grade poured and curing





## High School

- STEM structural steel and masonry in progress
- Administration offices remodel
- Water piping fabrication in cafeteria
- New block wall in wrestling area



## High School

- Temporary wall at gym
- Pool surge tank formed and poured
- Gym piers and foundation work in progress



07/23/20

**Milton School District 2019 Referendum Projects  
BUDGET SUMMARY**

<b>DESCRIPTION</b>	<b>BUDGET</b>	<b>FINAL PROJECTED COST</b>	<b>PAYMENTS TO DATE</b>	<b>% Complete</b>
Pre-Development	107,660	129,345	107,134	82.83%
Professional Services <i>Design, Project Mgmt, Legal, Quality Testing</i>	3,924,459	4,045,398	3,210,421	79.36%
Owner Provided Equipment <i>Furnishings, Service Equipment, IT Equipment, Signage</i>	1,193,816	1,429,000	83,603	5.85%
Construction <i>Building and Site Development</i>	54,031,464	54,411,123	12,080,783	22.20%
Other Project Expense <i>Bond expenses, Legal Fees , Moving</i>	22,500	20,000	8,012	40.06%
Income <i>Bond income, Friends of Milton Pool, Focus on E</i>	(950,099)	(1,259,008)	0	0.00%
Owner Contingency	1,570,200	1,124,142	0	0.00%
<b>TOTAL</b>	<b>59,900,000</b>	<b>59,900,000</b>	<b>15,489,953</b>	<b>25.86%</b>
<b>FINAL PROJECTED COST</b>	<u>59,900,000.00</u>			
<b>Balance - Under / (Over)</b>	<u>0.00</u>			