

Project Status Report for

Milton School District

12/31/2020

Mike Huffman, HFD

Your Partner in Development

Construction Progress

- **Middle School** – Exterior building work at the addition is now down to only painting of miscellaneous steel components. This, along with landscaping work will occur in the spring. In the interior of the addition installation of finish elements such as cabinetry, lockers, ceiling tiles, and paint are underway. Permanent lighting and now functional. The only flooring installed to date has been the tile in the restrooms. Flooring installation in the remaining spaces will get underway in January. Work continues in in the existing space to create the expanded kitchen and the weight room.
- **High School** – STEM addition exterior enclosure is 90% complete. Interior walls are all now in-place. Mechanical , electrical, plumbing and fire protections rough-in work is nearly complete on the lower level and more than 50% complete at the 2nd level. Painting has begun at the lower level. At the pool addition the crew has focused on completing all overhead work before the hole is dug for construction of the pool vessel. Masonry walls in the locker rooms are now in-place. The roof/insulation system is now fully installed at the gym addition and exterior masonry wall construction is at approximately 50%. The schedule for work in the existing locker rooms and the existing pool area has been accelerated with demolition now underway in the locker rooms and the pool to follow.

Project Administration

- **Middle School** – The project continues to be ahead of schedule while the work is of high quality. Minor quality concerns have been noted have now been satisfactorily addressed. Work in the existing spaces have revealed some previously unknown conditions and the team has adjusted work plans to accommodate.
- **High School** – The team has focused on schedule acceleration opportunities related to the existing spaces. Early work in the locker rooms and the old pool area will reduce pressure on the aggressive workload planned for the summer months.
- The Steamfitter's Union again picketed the project, in objection to our engagement of North American Mechanical Inc. JPC agreed to create dual project site access gates on both sides of the property.
- The final furniture order (High School) has now been placed by EBI. This is one of the more significant milestones for the non-construction components of the project, both logistically for locking-in budget expectations.
- **Project Budget** – No significant activity to report this month.

Middle School



Science Room



Lockers/corridor

Middle School



Band Room



Restroom

Middle School



Weight room



Multi-use room

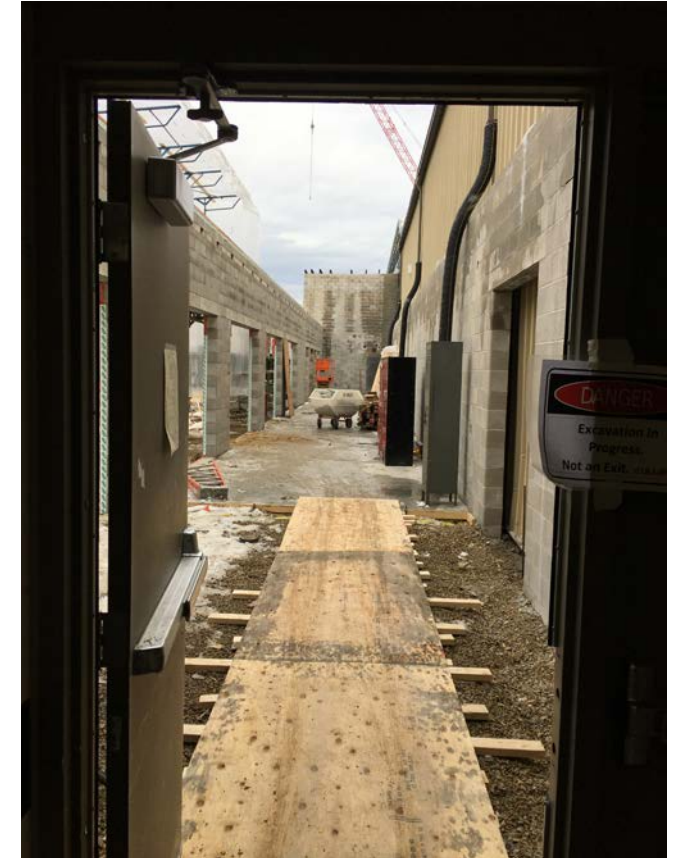
High School



End wall of existing gym
being removed



New Gym addition



New corridor to
new gym

High School



Heated masonry operation at
new gym addition



Pool

High School



Existing locker room corridor



Existing locker room

High School



Existing weight room



STEM addition- lower-level
corridor

High School



STEM addition- auto shop



STEM addition- welding booths

12/30/20

**Milton School District 2019 Referendum Projects
BUDGET SUMMARY**

DESCRIPTION	BUDGET	FINAL PROJECTED COST	PAYMENTS TO DATE	% Complete
Pre-Development	107,660	130,282	124,849	95.83%
Professional Services <i>Design, Project Mgmt, Legal, Quality Testing</i>	3,924,459	4,062,398	3,519,068	86.63%
Owner Provided Equipment <i>Furnishings, Service Equipment, IT Equipment, Signage</i>	1,193,816	1,653,162	729,355	44.12%
Construction <i>Building and Site Development</i>	54,031,464	54,812,027	33,114,933	60.42%
Other Project Expense <i>Bond expenses, Legal Fees , Moving</i>	22,500	20,000	8,012	40.06%
Income <i>Bond income, Friends of Milton Pool, Focus on E</i>	(950,099)	(1,647,148)	0	0.00%
Owner Contingency	1,570,200	869,279	0	0.00%
TOTAL	59,900,000	59,900,000	37,496,217	62.60%
FINAL PROJECTED COST	<u>59,900,000.00</u>			
Balance - Under / (Over)	<u><u>0.00</u></u>			