

*Project Status Report for*

# Milton School District

10/26/2020

Mike Huffman, HFD

Your Partner in Development

## Construction Progress

- **Middle School** – Exterior brick installation is almost complete. Mechanical/Plumbing system components are being installed. Electrical raceways are substantially complete and main panels have been installed. The base course of asphalt will be installed within the next week (final surface layer to be installed in spring). Work is beginning to convert existing band room to kitchen.
- **High School** – STEM exterior block walls are complete while interior block walls are substantially in-place. Roof joists and metal decking have been installed at the 1-story STEM area while roof joist installation has just begun at the 2<sup>nd</sup> floor. The steel frame of the Gym addition is now complete. Pool precast walls have all been set (two panels have been left out for crane/equipment access) and roof trusses are being installed. Exterior walls of the new connection corridor (by kitchen) are being constructed.

## Project Administration

- **Middle School** – Previously noted quality concerns related to saturated block walls and compromised air barrier have satisfactorily been remedied.
- **High School** – Due to increased number COVID cases in the county the construction team is now utilizing remote meeting formats more extensively. These video meetings are followed by on-site, in-person inspections.
- **All Elementary Buildings** – A few punch list items are still being addressed at Consolidated, and West.
- **Project Budget** – Although an official change order has not been executed to reflect the BOE approval for increased work scope related to the HS existing boiler loop, the budget report has been updated to reflect this future contingency use.

# Middle School



Corridor of the addition



Last section of brick to be installed



# Middle School



Band room



Driveway is ready for asphalt



Aluminum window frames have arrived

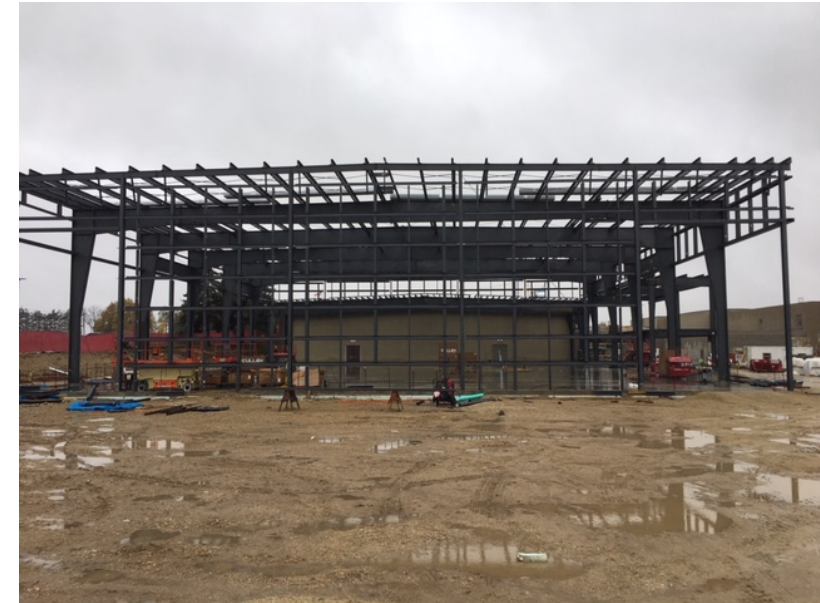
# High School



STEM Addition



2<sup>nd</sup> floor of STEM  
addition in corridor by  
elevator



Gym Addition



# High School



Pool Addition



New connection corridor

# High School



Pool locker rooms



Pool interior



10/23/20

**Milton School District 2019 Referendum Projects  
BUDGET SUMMARY**

<b>DESCRIPTION</b>	<b>BUDGET</b>	<b>FINAL PROJECTED COST</b>	<b>PAYMENTS TO DATE</b>	<b>% Complete</b>
Pre-Development	107,660	130,282	124,849	95.83%
Professional Services <i>Design, Project Mgmt, Legal, Quality Testing</i>	3,924,459	4,062,398	3,398,813	83.67%
Owner Provided Equipment <i>Furnishings, Service Equipment, IT Equipment, Signage</i>	1,193,816	1,589,000	668,274	42.06%
Construction <i>Building and Site Development</i>	54,031,464	54,852,286	24,496,196	44.66%
Other Project Expense <i>Bond expenses, Legal Fees , Moving</i>	22,500	20,000	8,012	40.06%
Income <i>Bond income, Friends of Milton Pool, Focus on E</i>	(950,099)	(1,609,008)	0	0.00%
Owner Contingency	1,570,200	855,042	0	0.00%
<b>TOTAL</b>	<b>59,900,000</b>	<b>59,900,000</b>	<b>28,696,144</b>	<b>47.91%</b>
<b>FINAL PROJECTED COST</b>	<u>59,900,000.00</u>			
<b>Balance - Under / (Over)</b>	<u><u>0.00</u></u>			