

Dear Parents/Guardians,

Below is information specific to students who will attend West Elementary School for one or both sessions of summer school.

Drop-off & Pick-up Instructions: PLEASE DO NOT DROP OFF OR PICK UP YOUR CHILD IN THE FRONT CIRCULAR DRIVEWAY OR THE SIDE PARKING LOT AREA. Parents should park along the street and walk their child across the park to the school. For the safety of staff and students, no vehicles should be in the circle drive in front of the school and no vehicles (other than staff) should be in the side parking lot.

Before School: School doors will be locked. All students should wait in the back playground area of the school and wait for their teacher. Students will enter the building with their class.

Students only in session 1: Students will wait for parent pick-up in the front by the office, not on the playground. Pick up time is 9:45 a.m.

Students taking session 2 at another building: Teachers will escort students to their bus.

Students at West for both sessions: Students will have supervised time on the playground in between sessions.

After School: All students will exit the building according to their session 2 class. *Please see the map on the following page.*

If you have any additional questions or concerns, please feel free to call the Summer School Office at 868-9575.

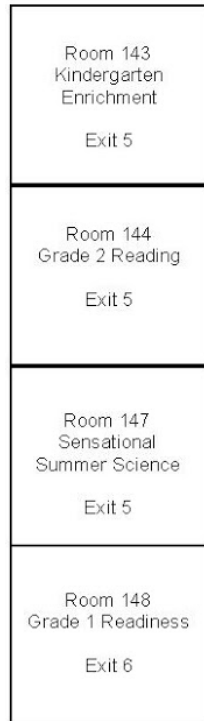
Thank you for your cooperation!

Sincerely,
Sarah Stuckey & Matt Biederwolf
Summer School Administrators

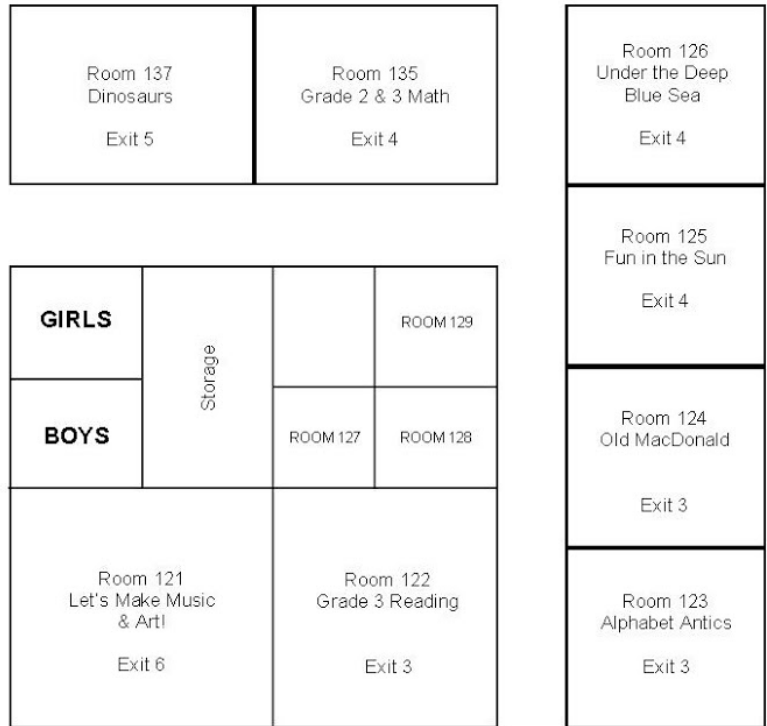
MILTON WEST ELEMENTARY
2018 Summer School

NO PARKING OR DROP-OFF
SIDE LOT

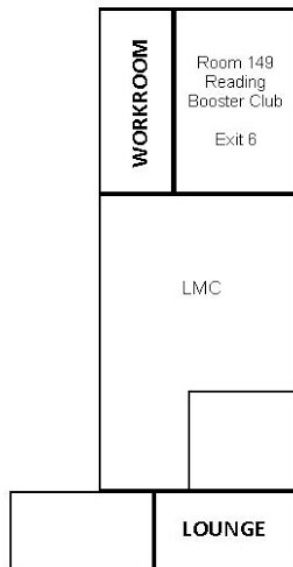
EXIT 5



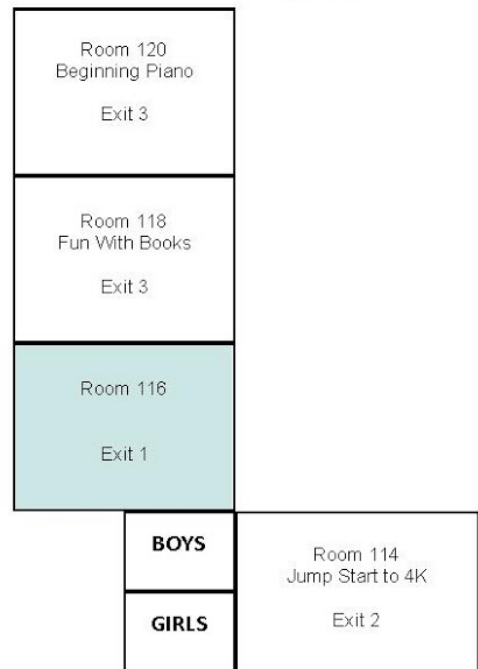
EXIT 4



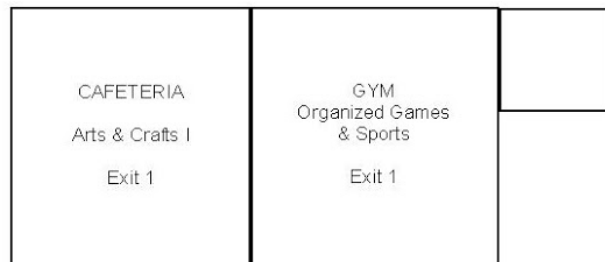
EXIT 6



EXIT 3



EXIT 2



NO PARKING OR DROP-OFF
DRIVEWAY

MAIN ENTRANCE
EXIT 1

NO PARKING OR DROP-OFF
DRIVEWAY